

# Dam 14 Phase 1: Embankment Rehabilitation Project

## Project Improvements Include:

- Improving stability of the downstream dam slope
- Repairing surface cracking along dam crest road

## Project Summary:

The Dam 14 Phase 1 Rehabilitation project is necessary to enhance dam safety through reducing the potential of damage from slope instability and repairing surface cracking on the dam crest and downstream embankment.

Schnabel Engineering completed alternative evaluations in 2021 to determine the preferred combination to increase the slope stability on the dam. Final design of the repairs by Schnabel Engineering was completed in January 2023.

## Dam Facts:

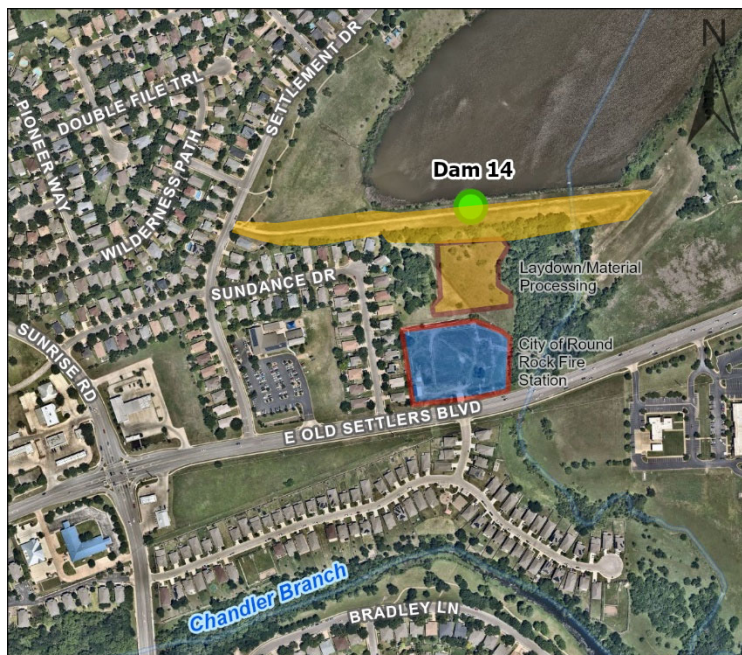
Maximum Storage: 2549 Acre Feet

Maximum Height: 25 feet

1966 Original Construction – by Soil Conservation Service (now NRCS)

2006 Modernization Project, Phase 1 – Installed original crest road on top of dam and new outfall stilling basin, as well as replaced intake slide gate

2010 Modernization Project, Phase 2 – Installed parapet wall to raise dam to meet new TCEQ Dam Safety regulations



**Dam 14 (AKA Meadow Lake) in Round Rock**

## Project Timeline:

### 2020 – 2024 Repair and Rehabilitation Project

- *(2020-2021) Preliminary Design*
  - Engineering Assessment Report completed April 2021
- *(2021-2023) Final Design and Permitting*
  - Final Design: July 2021 – January 2023
  - TCEQ Dam Safety Approval: April 2023
- *(2023-2024) Construction*
  - In progress: August 2023 - Spring 2024